

EADON
LOCKWOOD
& RIDDLE
ESTD 1840

60 St. Johns Road

Laughton-en-le-Morthen, Sheffield, S25 1YN

Guide Price £200,000

EADON
LOCKWOOD
& RIDDLE
ESTD 1840



1



1



E

60 St. Johns Road



Description

GUIDE PRICE £200,000 - £215,000

Set back from the main road & with accommodation over 3 floors, is this deceptively spacious 4 bedroom semi detached family home.

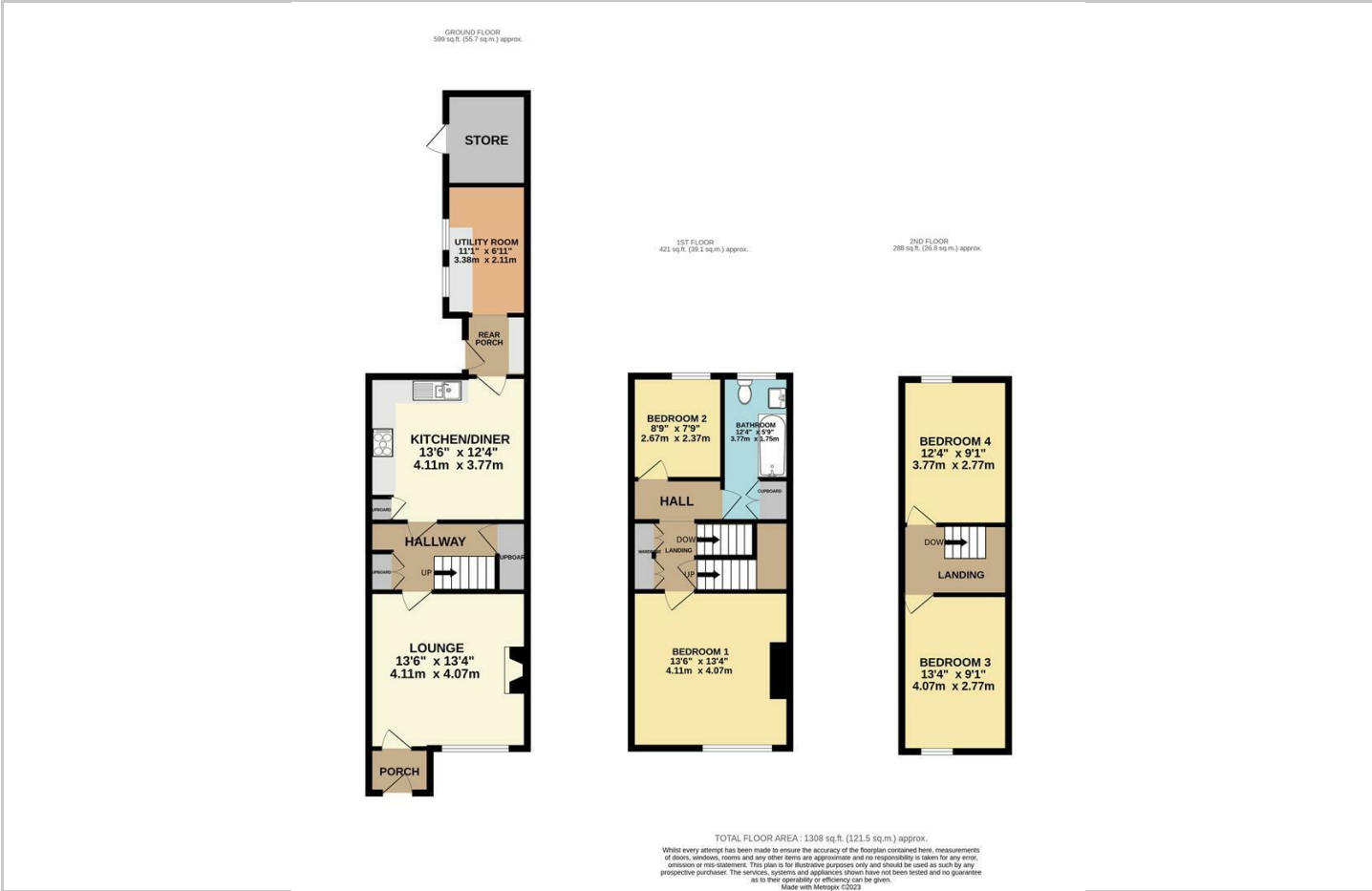
Ideally suited to the growing family this property is located in the ever popular village of Laughton-en-le-Morthen & just a few miles from Dinnington where there are an abundance of shops & amenities upon Laughton Road whilst in the opposite direction are wonderful walks in the countryside surrounding Brookhouse & Slade Hooton.

- A 4 bedroom semi detached period home
- Security alarm system
- Spacious dining kitchen with abundance of units
- Attractive modern bathroom suite in white with shower over bath
- 2 double bedrooms to 2nd floor
- Accommodation over 3 floors
- Front & rear lawned garden inc. patio area
- Freehold / Tax Band B
- Double & single bedroom to 1st floor
- Deceptively spacious within - viewing highly recommended





Floor Plan



Area Map



Viewing

Please contact our ELR Wickersley Office on 01709 917676 if you wish to arrange a viewing appointment for this property or require further information.

These particulars, whilst believed to be accurate are set out as a general outline only for guidance and do not constitute any part of an offer or contract. Intending purchasers should not rely on them as statements of representation of fact, but must satisfy themselves by inspection or otherwise as to their accuracy. No person in this firms employment has the authority to make or give any representation or warranty in respect of the property.

Energy Efficiency Graph

